

15.3 Pneumatic Diagram

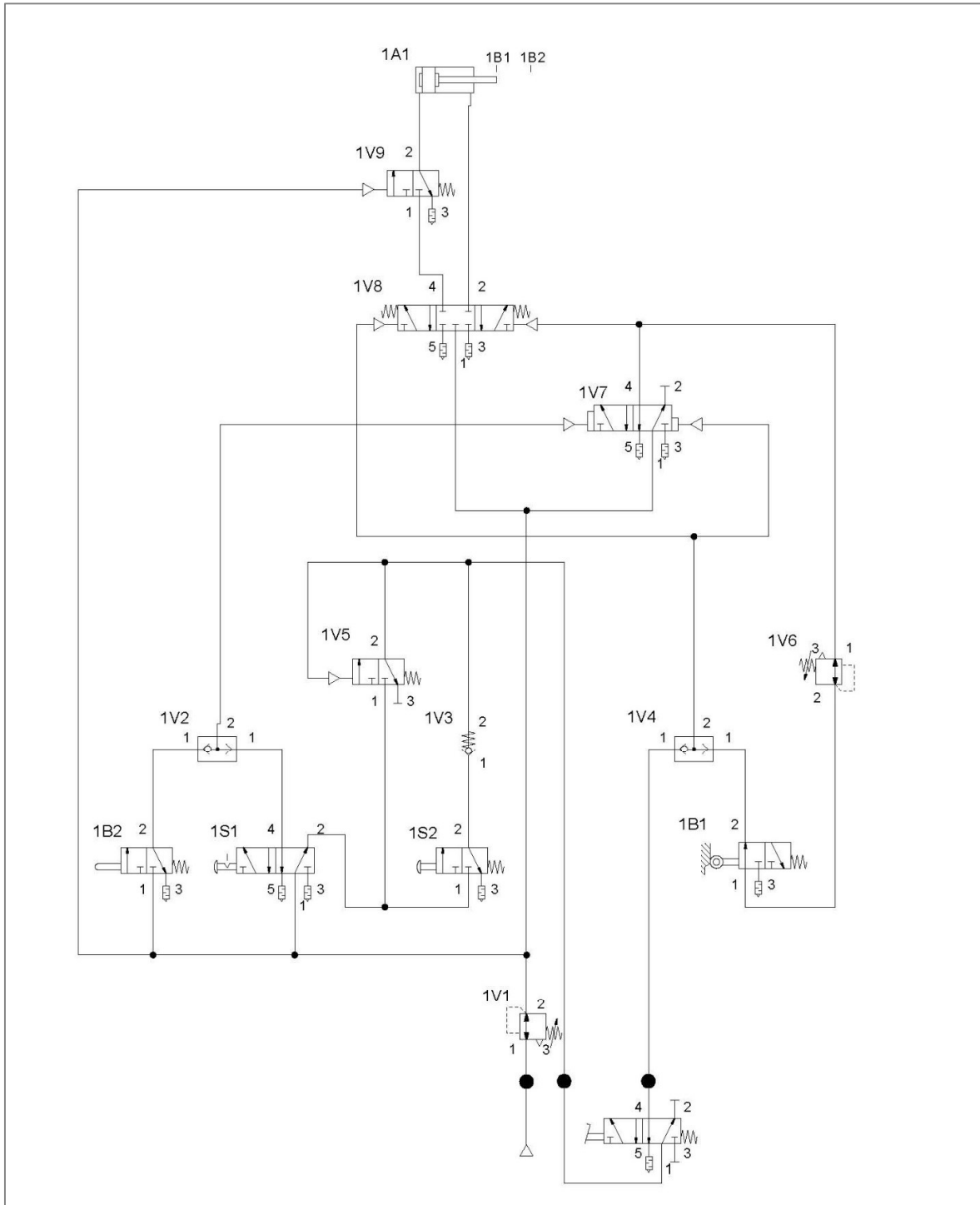


Fig. 15.2

15.4 Spare Parts List pneumatic

ID	Pieces	Article-No.	Description
1V2, 1V4	2	8480-88086	Shuttle valve
1V7	1	8480-85002	Pneumatic 5/2 valve
1V8	1	8480-88089	Pneumatic 5/3 valve
1B2	1	8480-88005	Pneumatic 3/2 valve
1S1	1	8481-03003	Pneumatic 5/2 valve
1V9, 1V5	2	8481-03057	Pneumatic 3/2 valve
1S2	1	8480-89007	Pneumatic 3/2 valve
1B1	1	8480-89006	Pneumatic 3/2 valve
1V1	1	8481-03003	Pressure valve, adjustable
1V3	1	8481-03049	back pressure valve with tension
1V6	1	8481-03004	Pressure valve, adjustable

The repair of the machine has to be executed by trained personnel. Please contact the producer or distributor of the machine!

Service address:

WEZAG GmbH
 Werkzeugfabrik
 Wittigstraße 8
 35260 Stadtallendorf

Telephone: +49 6428 704-0

15.5 Accessories overview for re orders

- | | | |
|----|---------------------------------------|-----------------------|
| 1. | Pneumatic foot pedal with cover | order no.: 1481-03033 |
| 2. | Air hose set | order no.: 1881-03001 |
| 3. | Hexagon wrench key set | order no.: 1881-03002 |
| 4. | Power supply with changeable adapters | order no.: 1881-03005 |